



# Dulwich College

London

## Ages

12–14

## English Level

B1+

## Academic Hours

25 Hours Per Week

## Programme Options

Residential or Day

## Maximum Class Size

15

## Delivered in Partnership With

**INVESTIN**

## The Ultimate Career Discovery Experience

This two-week Career Discovery programme is ideal for students beginning to explore future career options in today's most competitive fields.

Developed in partnership with InvestIN, this joint programme gives students direct exposure to competitive career pathways. Students will take part in immersive simulations in Medical Sciences, Finance, Business, Computing, AI & Robotics and Engineering. Students will work in small groups to experience these competitive fields as well as attending two days of interview preparation and career skills workshops at London's UCL. This programme is designed for ambitious young people starting out on their career journey, wanting to help narrow down their path.



**Duration**  
2 Weeks



**Start Dates**  
6th July and 20th July 2026  
20th July – 3rd Aug 2026



**Price**  
£5,690



LINE @ProgresstotheUK    EMAIL Pimm@pimm-education.com

PHONE 062 641 4653 (K.Pimm) / 082 993 6549 (K.Pice)    FACEBOOK    INSTAGRAM    PROGRESS TO THE UK



## The Career Discovery Summer Experience

Designed to introduce students to professional thinking at an early stage, helping them understand how different subjects are applied beyond the classroom. Each module focuses on a specific career area, combining subject knowledge with practical challenges that reflect real professional environments.

Students might analyse medical case studies, develop business concepts, explore coding logic or take part in engineering problem-solving tasks. Emphasis is placed on teamwork, communication and decision-making, encouraging students to think critically and work collaboratively.

Students gain exposure to a wide range of career pathways, helping them identify interests and strengths while developing transferable academic and personal skills.



## Example Excursions



### London Sightseeing Tour & Attractions

See famous landmarks, visit world-class museums and cultural attractions, take epic photos, shop some big-name stores, and soak up London's unforgettable energy.



### University College London

Attend a day at London's Global University and prepare yourself for school, university and job interviews. Learn how to develop a basic CV appropriate for all ages and understand how to differentiate yourself from an early age.



## Social Programme

Our programme balances focused daytime learning with a structured evening social and wellbeing programme, giving students space to unwind, connect, and feel settled on campus. It's fully supervised by our team, so students can relax and enjoy their time with new friends. Activities include:

Arts & Crafts

Badminton

Basketball

Silent Disco

Talent Show

Karaoke

Football

Yoga

Rounders

Film Festival

Picnic in The Park

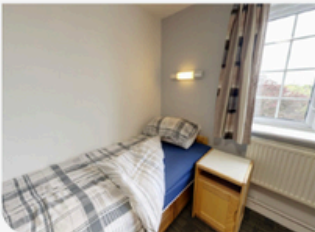
Cricket

Volleyball

Museums

Creative Writing

and many more!



## Accommodation

Students stay in comfortable boarding accommodation on a spacious, green London campus with easy access to the city for activities. Modern rooms and shared spaces, plus on-site common rooms, laundry facilities and pastoral support, give students everything they need for a relaxed and well-supported stay.

Classrooms

Gym

Laundry Service

Modern Dining Hall

Shared Bathrooms

Single Room

Small Dorm Rooms

Ensuite Rooms Available

Sports Hall

Student Common Room

Swimming Pool

Theatre

Traditional Dining Hall

Twin Rooms

Wi-Fi

LINE @ProgresstotheUK Pimm@pimm-education.com

062 641 4653 (K.Pimm) / 082 993 6549 (K.Pice) Facebook Instagram Progress to the UK



# A Typical Day at Dulwich College

 07.45 – 09.00

## Wake Up & Breakfast

The day starts with a gentle wake-up from House Parents, followed by breakfast on campus. Students have time to ease into the morning, catch up with friends, and get ready for the day ahead in a relaxed, supportive setting.

 09.00 – 10.00

## Morning Registration

Students come together for morning registration, a chance to check in with staff, go over the day's plans, and get set for the academic sessions ahead.

 10.00 – 13.00

## Career Discovery: Sales & Trading

The morning is dedicated to immersive career-focused learning. Students explore how the trading floor operates and how investment banking works in practice. Through expert-led sessions, they hear directly from a professional trader about their career journey, develop specialist financial vocabulary, and gain insight into the technology that underpins modern finance.

 13.00 – 14.00

## Lunch

Lunch is served on campus, giving students time to refuel, relax, and socialise before the afternoon's practical sessions.

 14.00 – 16.00

## Live Trading Simulation

Afternoons at Canford are filled with adventure. Students can choose from a wide range of options - from football, tennis, and swimming to art, crafts, and drama. For those wanting an extra challenge, optional extras such as bushcraft or specialist sports coaching provide even more opportunities to learn and explore.

 16.30 – 18.00

## Multi-Activity Programme

Students can choose from a range of activities, including football, arts and crafts, and team-building games. It's a chance to stay active, try something new, or simply enjoy time with friends after a focused academic day.

 18.00 – 19.00

## Dinner & Free Time

Dinner is followed by free time to unwind in houses, relax with friends, or speak with family back home. Staff are on hand to offer support and ensure everyone feels settled.

 19.00 – 20.30

## Evening Social Programme

Evenings bring the community together for relaxed on-site activities such as quizzes, staff-led scavenger hunts, and informal sports. These sessions are designed to be sociable, inclusive, and a fun way to round off the day.

 20.30 – 22:00

## House Time & Lights Out

Students return to their rooms for lights out, ready to rest and recharge ready for another day of learning and adventure tomorrow.





# Sample timetable

Monday	Tuesday	Wednesday	Thursday	Friday	Saturday	Sunday
🕒 07:30 - 08:15 Wake up & House Meeting						
🏠 08:15 - 09:00 Breakfast						
📖 09:00 - 10:00 Morning Assembly & Skills Workshop						
📖 10:00 - 11:00 The World of Business & Finance	📖 10:00 - 11:00 The World of Sales & Trading		📖 10:00 - 11:00 The World of Technology	📖 10:00 - 11:00 The World of Robotics, AI & Gaming	 Experience a day at London's Global University, building early interview skills, CV awareness and the confidence to stand out as you prepare for future study and work.	👥 10:00 - 11:00 Multi-Activity
🍏 11:00 - 11:30 Break			🍏 11:00 - 11:30 Break			🍏 11:00 - 11:30 Break
📖 11:30 - 13:00 The World of Business & Finance	📖 11:30 - 13:00 The World of Sales & Trading		📖 11:30 - 13:00 The World of Technology	📖 11:30 - 13:00 The World of Robotics, AI & Gaming		👥 11:30 - 13:00 Multi-Activity
🕒 13:00 - 14:00 Lunch			🕒 13:00 - 14:00 Lunch			🕒 13:00 - 14:00 Lunch
🌟 14:00 - 16:00 Build Your Own Business	🌟 14:00 - 16:00 Live Trading Competition Simulation		🌟 14:00 - 16:00 Mini-Hackathon	🌟 14:00 - 16:00 Robotics & Gaming Simulation		👥 14:00 - 16:00 Multi-Activity
🏠 16:00 - 16:30 Break			🏠 16:00 - 16:30 Break			🏠 16:00 - 16:30 Break
👥 16:30 - 18:00 Multi-Activity	👥 16:30 - 18:00 Multi-Activity	👥 16:30 - 18:00 Multi-Activity	👥 16:30 - 18:00 Multi-Activity	👥 16:30 - 18:00 Packing		
🕒 18:00 - 19:00 - Dinner						
👥 19:00 - 20:30 Whole School Evening Event	👥 19:00 - 20:30 Whole School Evening Event	👥 19:00 - 20:30 House Event	👥 19:00 - 20:30 Whole School Evening Event	👥 19:00 - 20:30 Whole School Evening Event	👥 19:00 - 20:30 House Event	🌟 18:00 - 21:30 End of Programme Celebration
🏠 20:30 - 21:30 House Time						
🕒 21:30 - 22:00 - Lights Out						

Sample timetables are given as an example to illustrate a typical week and are subject to change.

LINE @ProgresstotheUK    ✉ Pimm@pimm-education.com

📞 062 641 4653 (K.Pimm) / 082 993 6549 (K.Pice)    🌐 Progress to the UK

