

Day	Time	Detailed Activities
Friday, 10-APR-26	09:50	Meet at Suvarnabhumi Airport Gate 7, Check-in for Capital Airlines, Flight JD420
(Day 1)	12:50 - 17:50	Flight to Hangzhou
	17:50 - 18:50	Immigration, baggage claim, customs, and airport exit
	18:50 - 19:50	Transport to hotel via metro
	19:50 - 20:20	Check-in at the hotel and Dinner
Saturday, 11-APR-26	08:00 - 09:00	Breakfast at hotel
(Day 2)	09:00 - 09:30	Travel to Alibaba Xixi Park and Group Picture
	09:30 - 12:00	Alibaba 101 Lecture
	12:00 - 12:30	Campus tour and head to alibaba canteen for lunch
	12:30 - 13:30	Lunch at Alibaba Canteen
	13:30 - 18:30	C2B Workshop and Alibaba GDTsim business simulation introduction
	18:30 - 19:00	Walk back to hotel and drop off stuffs
	19:00 - 21:00	Guided tour to Wulin Night Market, by metro
Sunday, 12-APR-26	08:00 - 09:00	Breakfast at hotel
(Day 3)	09:00 - 09:30	Travel to Alibaba Xixi Park
	09:30 - 12:00	Group Workshop
	12:00 - 13:00	Lunch at Alibaba Canteen
	13:00 - 16:00	GDTsim Session
	16:00 - 17:00	Flyzoo and Hema Experience
	18:00 - 21:00	Guided tour to IN77 and night walk at Hubin Street, by metro



Day	Time	Detailed Activities
Monday, 13-APR-26	08:00 - 09:00	Breakfast at hotel and check-out
(Day 4)	09:00 - 09:30	Travel to Alibaba Xixi Park
	09:30 - 12:30	Complete the GDTSim Game and Award Ceremony
	12:30 - 13:30	Lunch at Alibaba Canteen
	13:30 - 16:30	Travel to Jinglai Hotel (Qufu, Shanghai), students are dropped-off to check-in with their carry-on, luggage would be sent to Heyitang Hotel. <i>**Please make sure to pack what are needed for a night in your carry-on; otherwise, a fabric bag would be provided.**</i>
	16:30 - 21:00	Excursion activities at Nanjing Road and the Bund scenery spots
	21:00 - 21:30	Walk back to hotel and rest
Tuesday, 14-APR-26	08:00 - 09:00	Breakfast at hotel and check-out
(Day 5)	09:00 - 21:00	Excursion activities at Yuyuan Garden, Xintiandi, Tianzifang and Lujiazui
	21:00 - 21:40	Travel to Heyitang Hotel
	21:40 - 22:30	Check-in, late night dinner buffet, and rest
Wednesday, 15-APR-26	06:00 - 07:00	Breakfast at hotel
(Day 6)	07:20 - 07:40	Travel to Disneyland by bus
	07:40 - 22:00	Excursion activities at Disneyland Shanghai
	22:20 - 22:40	Travel back to hotel by bus
	22:40 - 23:30	Late night buffet at the hotel and rest
Thursday, 16-APR-26	09:00 - 10:00	Breakfast at hotel and check-out
(Day 7)	10:00 - 10:30	Travel to Shanghai Wild Animal Park
	10:30 - 17:00	Excursion at Shanghai Wild Animal Park
	17:00 - 17:30	Travel back to the hotel and pick-up the luggage
	18:00 - 18:30	Travel to Pudong International Airport and check-in for Juneyao Airlines, Flight HO1351
Friday, 17-APR-26	20:55 - 00:30 (+1)	Flight to Suvarnabhumi Airport
(Day 8)	00:30 - 01:00	Safely arrive in Bangkok, custom and airport exit



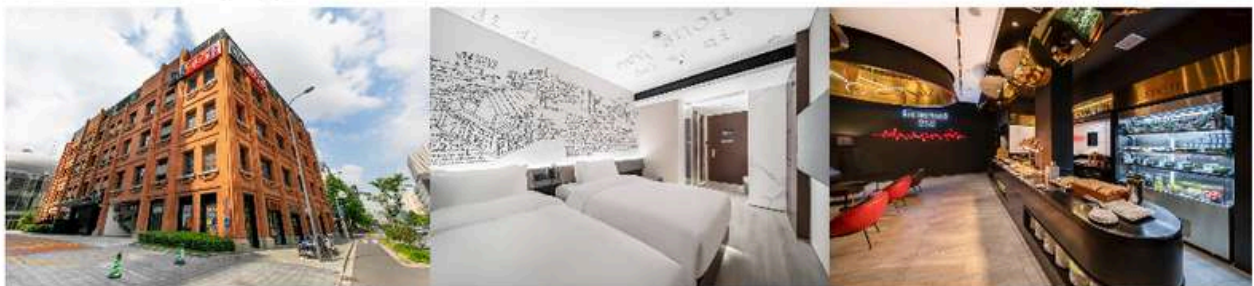
Remarks :

1. Students under the age of 16 will be under a close supervision and accompanied by our staffs.
2. Students are responsible to sponsor for their own lunch and dinner. They can use Truwallet or ask our staff to advance the money and we will invoice the parents during the camp or after.
3. Students are required to bring either a **laptop, tablet, or iPad** to participate in our simulation game.
4. Before departure, GDTsim and PROGRESS will hold a pre-departure to prepare the participants of the camp requirements and departure to China.
5. The camp includes training, E-Sim, major transportations, activities, entrance fees, traveling insurance, and hotel nights with breakfast. Should participants who require additional nights can request to our staffs.

Hotel in Hangzhou, Muliangzhuang Hotel Hangzhou Future Technology City



Hotel in Shanghai, Jinglai Hotel



Hotel in Shanghai, Heyitang Hotel Shanghai

